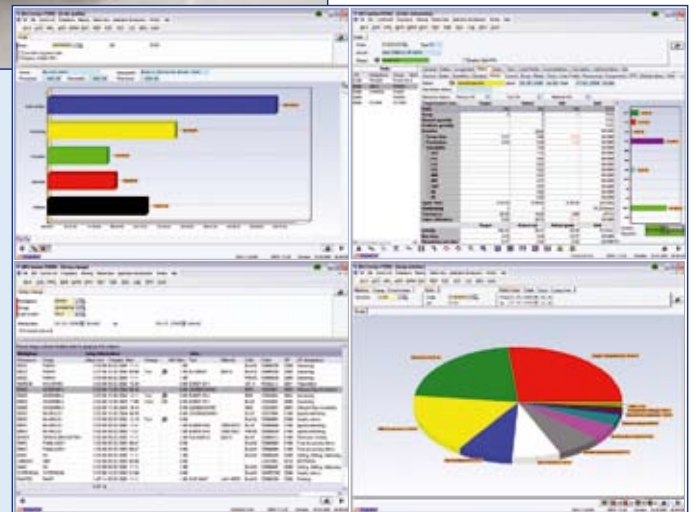


# HYDRA- Order Data Collection



- Ergonomic data collection
- Tools for flexible shop floor control
- Support of paperless production
- Splitting and grouping of operations
- Monitoring of production orders
- Versatile order and article statistics
- Interfaces to ERP / PPS systems

# PRODUCTION

# HYDRA-Order Data Collection

## Optimum support for production-related departments

Today, manufacturing companies have to cope with shorter delivery times, smaller production batches and continuously increasing cost pressures.

As a result, real-time information becomes more and more critical for operations closely linked to production, such as work scheduling and shop floor control and especially for the production manager.

HYDRA order data collection provides timely and comprehensive information on production processes. This enables HYDRA users to accomplish objective cost control and final costing.

## Organization and Planning

- Definition of production managers' areas of responsibility and cost centers
- Download of orders and operations from ERP / PPS systems
- Creation, maintenance and administration of work plans and orders in addition to the ERP / PPS system
- Printing shop floor papers, labels and time tickets
- Generation of split and milestone operations as well as grouping of operations
- Sequencing, graphical order scheduling, material requirements and setup lists
- Consideration of alternative units (quantities, weights, areas, running meters) including individual rules of conversion
- Configurable calculation formulas for remaining running times
- Definition of order types for differentiated handling of various kinds of orders (production, overhead cost, project or capacity orders)

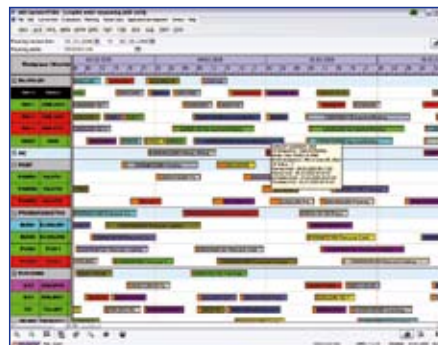
## All data available at the push of a button

### Data Collection

- Logon/logoff, interruption and partial confirmation of operations or orders
- Recording of quantities, scrap and interruption reasons
- Configurable plausibility checks, e.g., regarding under-delivery and over-delivery
- Collection of personal or person-group related times
- Gathering of production and downtime reasons to freely definable performance accounts
- Capturing of batch data and material consumption
- Special functions for machining centers (order pool)
- Recording consumption data

### Current Information

- Order pool and to-do lists for orders (tabular and graphical)
- Order overview with prepared, running, interrupted and terminated operations
- Current status of operations and orders
- Order progress (electronic data recording) and calculation of remaining running times
- Concurrent cost control and determination of wait times
- Online comparison of targets and actual values
- Display of drawings, inspection instructions, bills of material and other order-relevant data



## Recognizing problems within the production process

### Evaluations and Statistics

- Terminated orders and schedule violations
- Order-related production, downtime and setup times
- Foremen's checklists and correction of collected data
- Shift logs, including target / actual comparisons of quantities and times
- Order, article and scrap statistics
- Order and article profile with comparison of order duration, processing, production, downtime and wait times (tables and graphics)
- Long-term archiving of order data
- Uploads of actual data to ERP/PPS

## Integration in HYDRA

As part of an integrated MES, order data collection can be used along with all other HYDRA modules.

HYDRA users benefit from:

- Parallel assignment of machine downtime, tools, batches and production batches to operations and orders
- HYDRA shop floor scheduling uses the progress confirmations of operations for permanent synchronization of the planned / actual situation
- Definition of personal characteristic data as the basis for determination of incentive wages in HYDRA
- Automatic assignment of inspection orders from HYDRA-CAQ to production orders
- Calculation of actual workforce requirements within HYDRA personnel scheduling on the basis of dispatched orders and scheduled production progress.

## MPDV Mikrolab GmbH

Römerring 1  
74821 Mosbach  
Germany  
Fon +49 (62 61) 9 20 9-0  
info@mpdv.de · www.mpdv.de

## MPDV locations:

Mosbach · Hamburg · Hamm ·  
Heidelberg · Munich · Stuttgart ·  
Winterthur / CH · Amboise / F ·  
Chicago / USA · Singapore / SGP

© 2009 MPDV Mikrolab GmbH  
Doku-Ident: PRADE ENG 06/2009

The mentioned product names are trademarks of the respective producers or suppliers.  
HYDRA® is an entered trademark of  
MPDV Mikrolab GmbH.